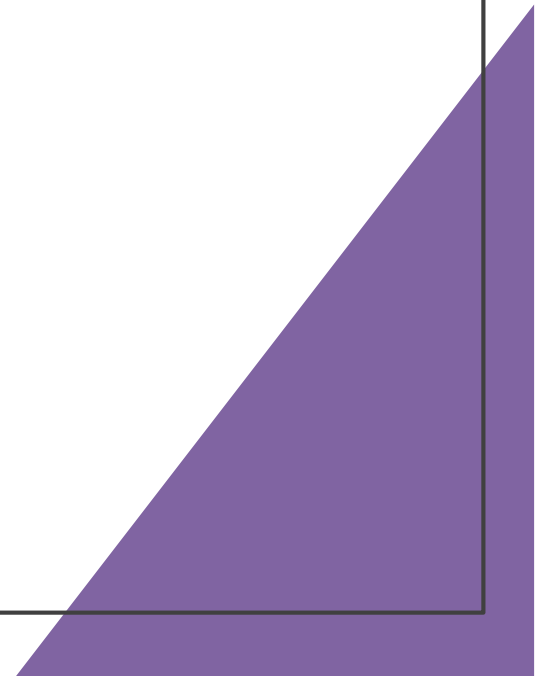


Admissions Update:
Faculty Senate Meeting
11/13/20



Overview

Overview of 2019-
2020 National
PharmCAS Trends

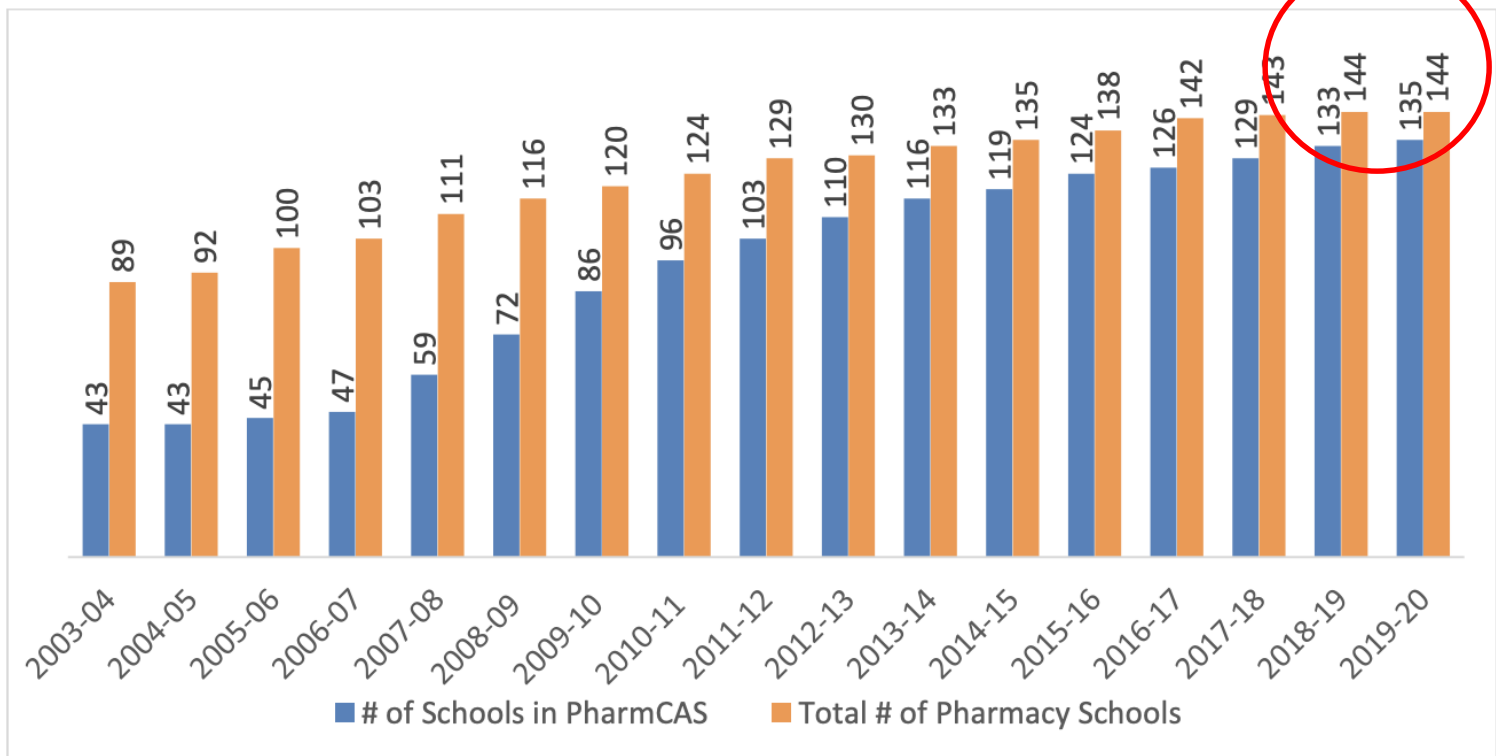
Overview of 2019-
2020 CUSSPPS
Admissions Cycle

Overview of 2020-
2021 CUSSPPS
Admissions Cycle
(to date)

National PharmCAS Trends in the 2019- 2020 Admissions Cycle

Number of Pharmacy Schools participating in PharmCAS stayed the same.

Figure 2: Number of Schools Participating in PharmCAS (2004-2020)



National PharmCAS Trends in the 2019-2020 Admissions Cycle- #3

Decrease in the Overall Applicant Pool (the glacier continues to melt)

Figure 4: Total Number of PharmCAS Applications (2004-2020)

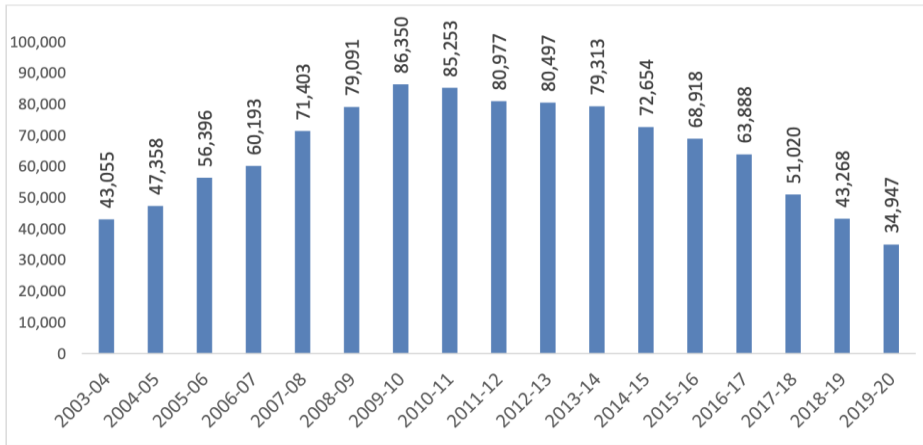
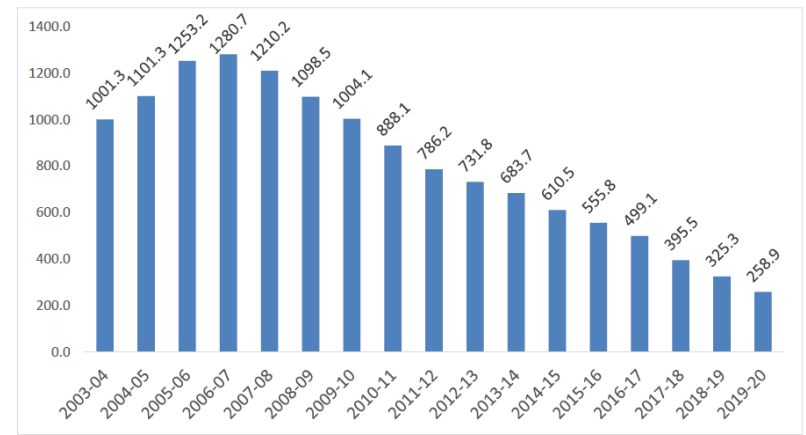


Figure 7: Mean Number of PharmCAS Applications per School (2004-2020)



2019-2020 Admissions Cycle Interview Invitation Formula

Interview Criteria

- Science GPA of 2.75 or higher
- Cumulative GPA of 2.5 or higher
- At least one letter of recommendation submitted with two prior to June 1.
- Pre-requisite coursework (met requirements are will meet by time of admission)
- Oral Proficiency Assessment

In addition for 2020-2021

- Online pre-requisite coursework will be accepted.
- Pass grade accepted for pre-requisite coursework in the spring and summer of 2020.

Summary of CUSSPPS 2019-2020 Admissions Interview Cycle

	TOTAL	Nonresidents, n (%)	Residents, n (%)
Applicants	516	410	106
Did Not Invite	106	91	15
Interview Invite Made	410	319	91
Withdrew Before Interview	83	74	9
No Show to Interview	1	1	0
No Response	7	7	0
Interviews Complete	320	233 (73%)	87 (27%)

Final Summary of CUSSPPS 2019-2020 Admission Offers

	TOTAL	Non-residents, n (%)	Residents, n (%)
Interviewed	320	233	87
Admission Offer Made	313	227	86
Declined Offer	93	85	8
Withdrew after Matriculation	61	58	3
Offer Rescinded	3	3	0
Deferred to 2020	18	9	9
Matriculated	138	72	66

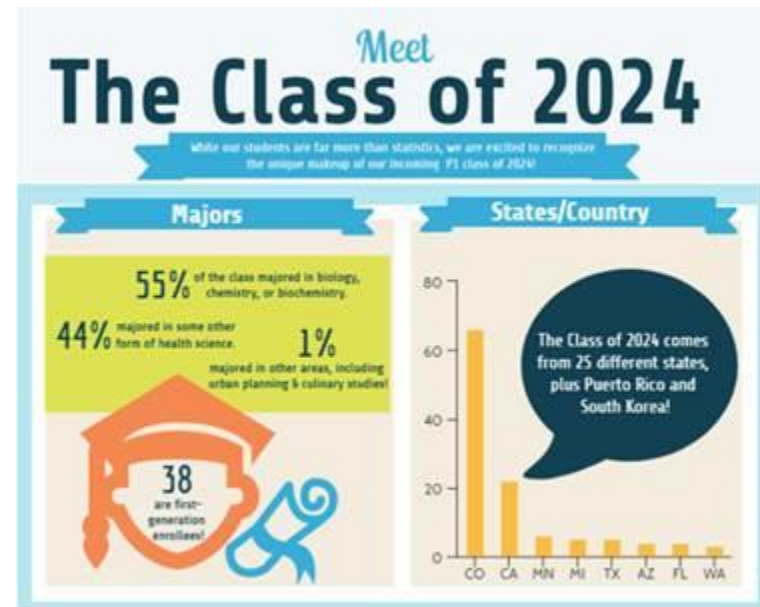
Demographics* (based on n=141)

Matriculated Class of 2024 : 138

Ethnicity*	%
White	49.1%
Asian	29.3%
Hispanic	13.8%
Black	5.4%
American Indian	1.8%
Hawaiian / Pacific Islander	0.6%

*multiple ethnicities reported (167 total)

Gender	%
Female	65%
Male	35%
Avg. Age at Submission of Application	24 years



Entering Matriculated Class of 2024, by State (based on n=141)

Residency	Count
Colorado	66
California	22
Minnesota	6
Michigan	5
Texas	5
Arizona	4
Florida	4
Washington	3
Alabama	2
International: Korea (the Republic of)	2
Massachusetts	2
Nevada	2
New York	2
Virginia	2
Arkansas	1
Illinois	1
Indiana	2
Iowa	1
Kansas	1
Maryland	1
Nebraska	1
New Mexico	1
Oklahoma	1
Oregon	1
Pennsylvania	1
Wisconsin	1
Puerto Rico	1

Entry Academic Performance Indicators: 2019-2020 Admissions Cycle

	2010-2011	2011-2012	2012-2013	2013-2014	2014-2015	2015-2016	2016-2017	2017-2018	2018-2019	2019-2020
Number of interviews complete	386	425	404	416	330	300	302	257	208	320
Cumulative GPA, mean	3.35	3.33	3.28	3.27	3.32	3.28	3.23	3.23	3.3	3.26
·Residents	3.42	3.36	3.31	3.25	3.34	3.35	3.32	3.36	3.29	3.29
·Nonresidents	3.32	3.32	3.27	3.28	3.35	3.25	3.22	3.13	3.31	3.24
Science GPA, mean	3.27	3.32	3.23	3.25	3.23	3.19	3.17	3.14	3.22	3.12
·Residents	3.35	3.38	3.3	3.21	3.25	3.27	3.26	3.28	3.20	3.12
·Nonresidents	3.23	3.3	3.2	3.26	3.25	3.16	3.13	3.05	3.22	3.11
PCAT Composite, mean (for those who submitted)	71	72	72	73.5	74	74.5*	69*	71*	72.5	70.1
·Residents	65	68	68	68	69	70*	69.5*	71	68.5	71.4
·Nonresidents	73	74	74	76	72	76	70*	71*	74	69.9

2020-2021 Effort and Endeavors

- 100% virtual interviews.
- Interview schedule to include two days (Thursday and Friday).
- The “Morning Dose”- Virtual meet and greet series
- Online pre-requisite coursework will be accepted.
- Pass grade accepted for pre-requisite coursework in the spring and summer of 2020.

Summary of CUSSPPS 2020-2021 Admissions Interview Cycle (as of 11/13/2020)

Number Table		11/12/2020		11/12/2019	
		Total	CO	Total	CO
Total PharmCAS Applications		159	34	201	47
Applications					
Applied Early Decision		25	20	38	25
Interviews					
Invited		116	24	165	45
Total Completed		70	23	100	40
Admissions					
Offer Made		70	23	89	36
	Offer Declined	7	0	8	0
	Pending Offers	10	0	1	0
	Pending Offers (over 2 weeks)	1	0	4	1
	Withdrew Matriculation	0	0	1	0
	Offer Rescinded	0	0	2	0
	Rejected	0	0	2	0
Matriculated 19-20		50	22	73	35
	Early Decision	23	19	35	25
	Regular Pool	27	3	38	10
	Confirmed Attendance 2020 (Defer 2019)	5	4	0	0
Matriculated + Deferred Confirmed		55	26	73	35
Pending					
	In Progress	246		338	
	Multiple Offers Made	0		5	
	Multiple Offers Accepted	0		10	

Summary of CUSSPPS 2020-2021 Admissions Interview Cycle (as of 11/13/2020)

TOTALS	20	%	19
Total Apps	159	▼ -18%	201
Total Apps (Defers excluded)	141	▼ -26%	195
Regular Pool Apps	134	▼ -15%	157
Invites	116	▼ -30%	165
Scheduled + Complete	98	▼ -29%	139
Offers Made	70	▼ -21%	89
Matrics	55	▼ -25%	73

The Future?

- Covid-19 impact is being felt for the 2020-2021 academic year.
- Relevant metrics are down between 20-30% compared to last year at the same time.
- Innovation we employed ahead of the curve has now been adopted across the board nationwide.
- Tuition, cost of living are primary factors driving admission.
- Concentrated efforts in:
 - scholarships
 - and a pre-pharmacy program
 - Meaningful efforts to address racial diversity through course offerings, programs and education of faculty

can sustain viability of the ELPD program.